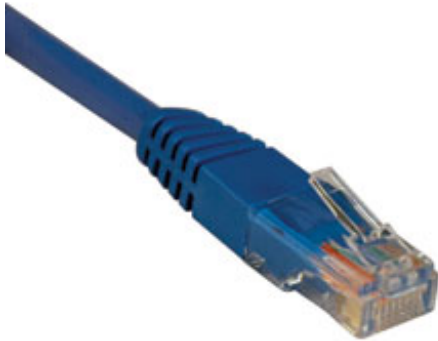




Tripp Lite
1111 West 35th Street
Chicago, IL 60609 USA
Telephone: +(773) 869 1234
E-mail: saleshelp@tripplite.com

Model #: N002-015-BL

15-ft. Cat5e 350MHz Molded Cable (RJ45 M/M) - Blue



Highlights

- Premium cabling for Category 5 and 5e applications—rated for 350 MHz/1 Gbps communications
- IEEE 802.3ab
- PVC 4-pair stranded UTP
- All cables feature boots with integral strain-relief and RJ45 (Male) connectors

Description

Tripp Lite's 15-ft. blue category 5e (Cat5e) patch cable has 2 standard RJ45 molded male connectors featuring integral strain relief. The cable is manufactured from PVC 4-pair stranded UTP and is rated for 350MHz/1Gbps communication. All cables are offered in a variety of lengths and colors for all category 5 (Cat5) and 5e cabling needs. Snagless category 5e patch cables are also available (N001-Series).

System Requirements

- For 1000Base-T (1Gbps Ethernet), 10/100Base-T (Ethernet), 100 Mbps TPDDI, 155 Mbps ATM, ISDN, voice and Token Ring Type3 applications.

Package Includes



- 15-ft. Cat5e Blue Patch Cable Molded 350MHz

Features

- Cabling for category 5 (Cat5) and 5e (Cat5e) applications
- Length: 15-ft. Color: blue Connectors: RJ45 male
- Feature molded connectors with integral strain relief
- PVC 4-pair stranded UTP
- Rated for 350MHz/ 1Gbps communication
- Meets most current industry standards including IEEE 802.3ab, IEEE 802.5, ANSI/EIA/TIA 568, ISO/IEC 11801 and ETL (category 5e draft 11)
- Available in other colors and lengths
- Also available in a snagless design (N001-Series) to protect the locking tabs on the RJ45 connectors from being damaged or snapped off during installation
- Also available - Cat6 cables (N201-Series)

Specifications

OVERVIEW	
Intended Application	Computer Networking

Model Type	Patch Cables
INPUT	
Cable Length (ft.)	15
Cable Length (m)	4.57
PHYSICAL	
Color	Blue
Style	Cat5/5e
CONNECTIONS	
Connector A	 RJ45 (MALE)
Connector B	 RJ45 (MALE)
CERTIFICATIONS	
Certifications	RoHS-Compliant
WARRANTY	
Product Warranty Period (Worldwide)	Lifetime limited warranty

More information, including related products, owner's manuals, and additional technical specifications, can be found online at www.tripplite.com/en/products/model.cfm?txtModelID=4560.

Copyright © 2012 Tripp Lite. All rights reserved. All trademarks are the sole property of their respective owners. Tripp Lite has a policy of continuous improvement. Specifications are subject to change without notice. Photos may differ slightly from final products.